

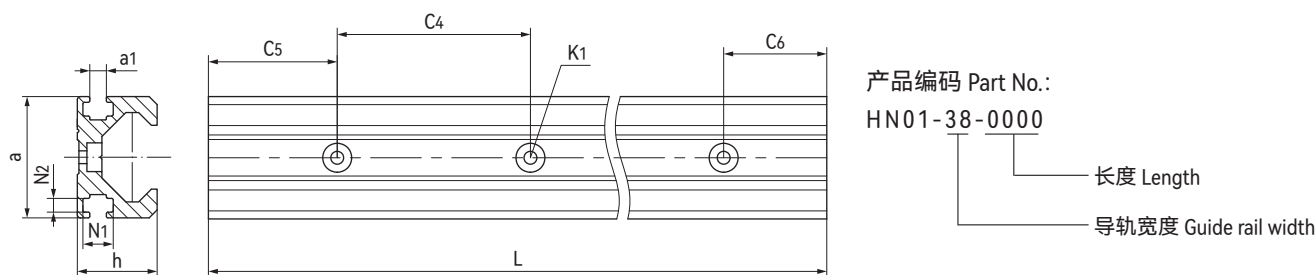
HN01直线导轨 Linear guide rails



产品特性 Product features

- 安装孔距与标准滚珠导轨保持一致
 - 表面经过硬质氧化铝合金
 - 可拼接实现超长导轨设计
 - 配合HNC免维护滑台使用
 - 轻量化设计
- The installation holes are consistent with the standard ball guide rails
 - Made of hard anodized surface of aluminum alloy
 - Available longer design by the guide rails connection
 - Maintenance-free with HNC roller carragies
 - Lightweight design

标准规格 Standard specifications



产品编码 Part No.	a [mm]	h [mm]	N ₁ [mm]	N ₂ [mm]	a ₁ [mm]	C ₅ =C ₆ [mm]		C ₄ [mm]	*K ₁ [mm]	L max. [mm]	重量 Weight [Kg/m]
						min.	max.				
HN01-38-0000	38	25	9.5	5.2	4.3	10	50	60	M4	3000	1.1

*K₁用于螺栓 For bolts

导轨两侧可配合M4菱形螺母安装传感器 M4 diamond nuts can be used to install sensors on both sides of the guide rail

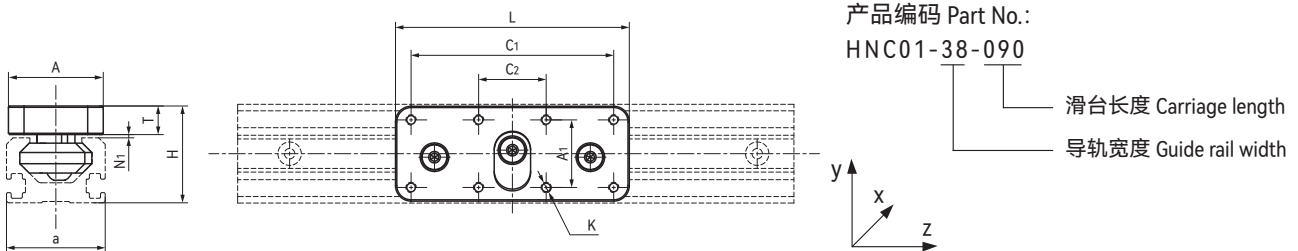
HNC01滚轮滑台 Roller carriages



产品特性 Product features

- 紧凑型设计滑台，自润滑免维护
 - 非常适合高速应用，最高速度10m/s
 - 顺畅运动，驱动力约为滑动滑台的10%
 - 安装螺纹孔与标准滚珠滑块保持一致
 - 带间隙补偿调节功能
 - 最高使用温度: 90°C
- Compact design carriages, self-lubricating and maintenance-free
 - Very suitable for high speed applications, the speed up to 10m/s
 - Smooth moving, Driving force is about 10% of sliding carriages
 - Installation threaded holes are consistent with the standard ball sliders
 - Clearance adjustment, multi-version
 - Max. long-term temperature: 90°C

标准规格 Standard specifications



产品编码 Part No.	A [mm]	A ₁ [mm]	a [mm]	C ₁ [mm]	C ₂ [mm]	L [mm]	H [mm]	N ₁ [mm]	T [mm]	K [mm]	静态载荷 Static load			重量 Weight [kg]
											Co _y - [N]	Co _z - [N]	Co _z + [N]	
HNC01-38-090	36.5	26	38	26	78	90	37.3	1.3	11	M4	585	2340	1170	0.16